

*Caritti.*

1832150  
1832152  
1832155  
1832157



# SAUNA ULTRA AMBIENT

LED strip with silicone profile IP67

LED strip for very demanding applications, Ta -40°C ... +125°C



## LED strip for very demanding applications

### Features

- LED strip with silicone profile for ultra-wide temperature range, cold and hot environments
- Good color rendering: CRI > 90, high luminous efficacy
- Uniform light: 140 LEDs / m
- Low voltage, constant voltage 24V, 3W / m
- Wiring: red +, black -
- IP67 protection class, suitable for humid environments
- RoHS, CE
- Ambient temperature: -40°C ... + 125°C
- Storage temperature: -30°C ... + 60°C
- 2 year warranty

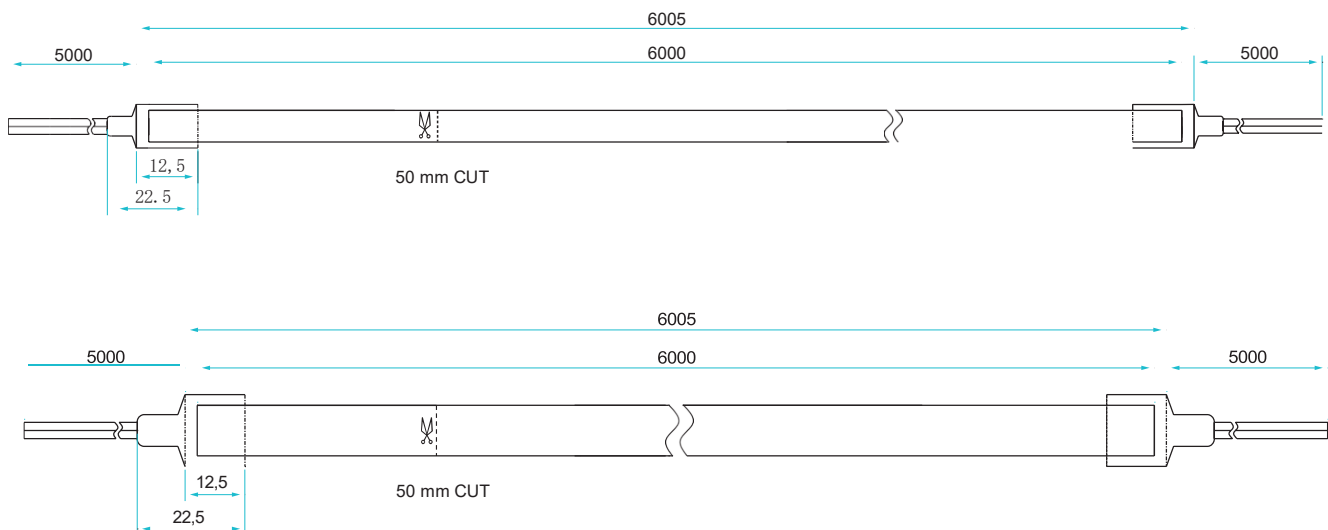
Side lighting



Top lighting



Dimensions, mm :



Length	2000 mm or 6000 mm
Minimal Length (cutting interval)	50 mm
Height x Width	Top 10 mm x 10 mm / Side 6 mm x 12 mm
Cable length	5000 mm
Peel length for welds	3 mm

## END CAPS AND CLIPS FOR THE SIDE LIGHT STRIP



END CAPS FOR THE SUPPLY CABLE



END CAPS



CLIPS STAINLESS STEEL  
L : 20 MM \* W: 6.8 MM \* H: 11 MM

## END CAPS AND CLIPS FOR THE TOP LIGHT STRIP



END CAPS FOR THE SUPPLY CABLE



END CAPS

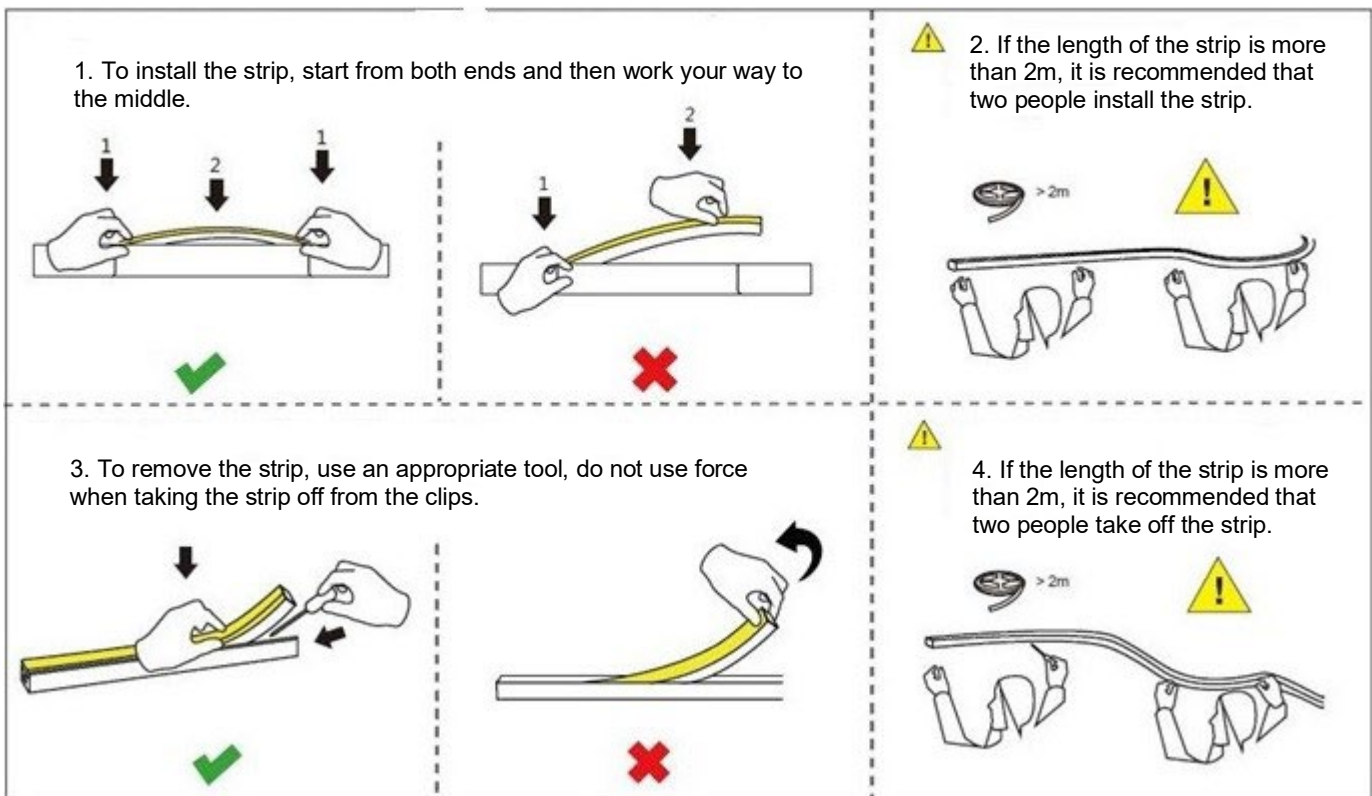


CLIPS STAINLESS STEEL  
L: 20 MM \* W: 11 MM \* H: 11 MM



## Instructions for assembly and use

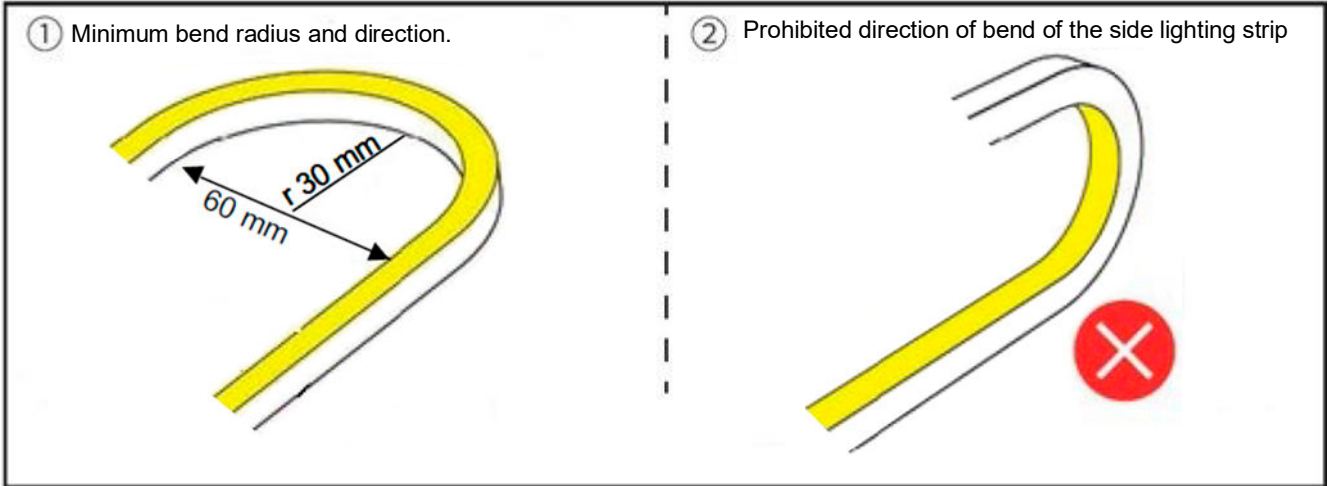
1. Clean the mounting surface.
2. Unwind the Sauna Ultra Ambient strip from the package
3. Place the clips every 25 cm
4. Instal the strip to the clips as shown in the picture below
5. After installing the Sauna Ultra Ambient, connect the cable to the 24V power supply and ensure that the connections are made correctly (positive + and negative - terminals).
6. Once the Sauna Ultra Ambient cables are connected, connect the 230 V cables to the power supply.



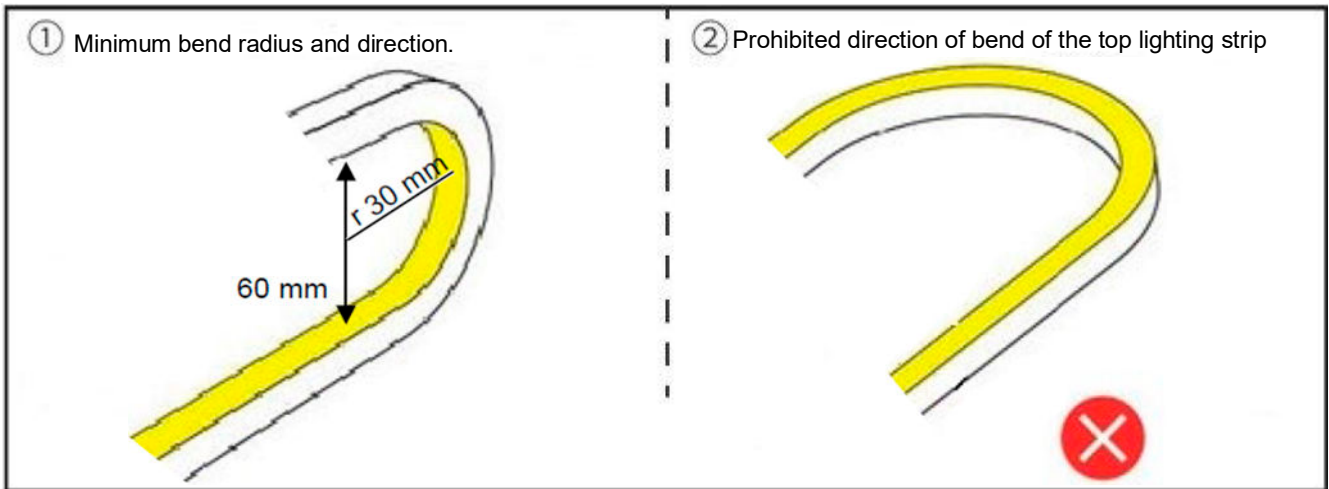
### Please note before use

1. The voltage of the power supply must be the same (24 V) as the voltage indicated on the LED strip. Install the power supply in accordance with the installation instructions and the local regulations.
2. Check that the strip cable is correctly connected to the power supply (positive + and negative - terminals), otherwise the strip will be damaged.
3. Do not switch the power on while mounting the strip. It will prevent the short-circuit failure, which is due to operating errors during installation of the strip. Switch the power on only after installation is complete and all connections have been made.
4. Sauna Ultra Ambient strip can only be cut at the dotted marks. Cutting the strip at any other point will damage the strip circuit and cause damage.
5. All connections, including end cap assemblies, should be done with care. A tight fit must be achieved when gluing the end caps and there must be no risk of short circuiting while soldering the wires.

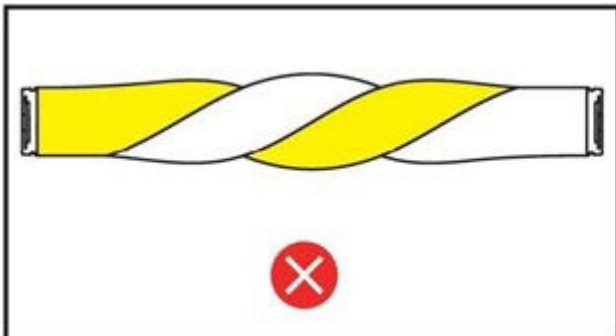
## SIDE LIGHTING



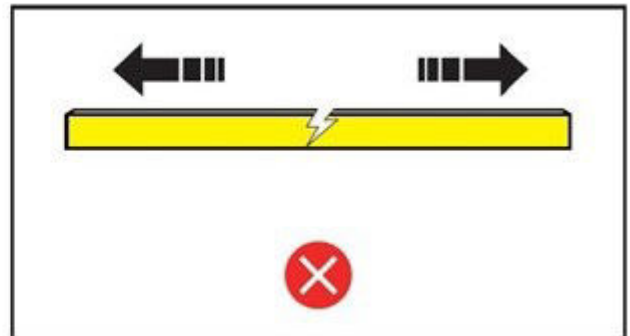
## TOP LIGHTING

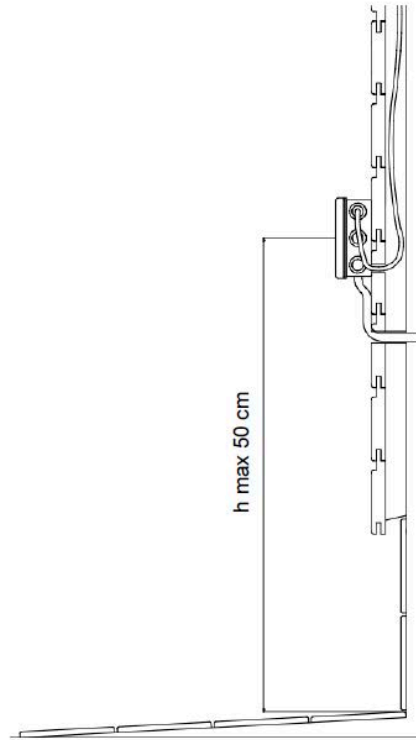


NOTE! Do not twist the strip.



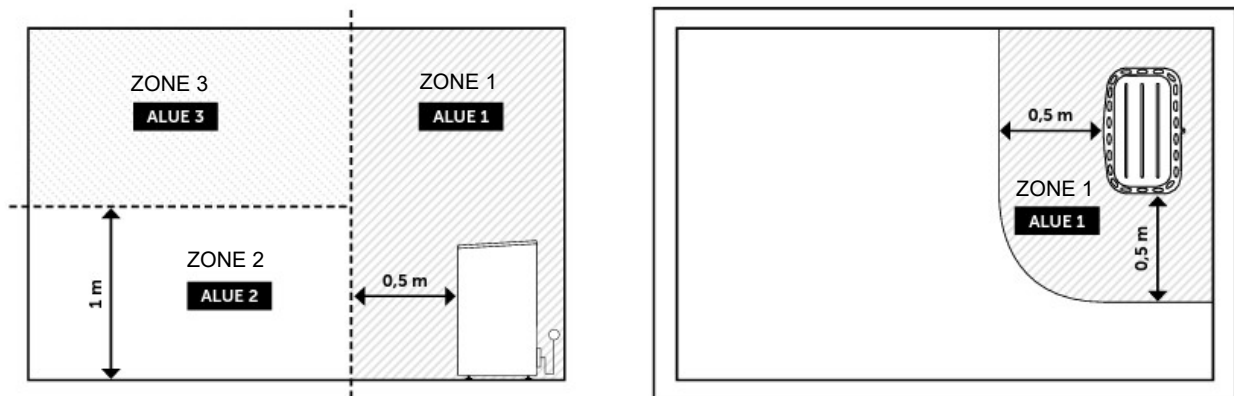
NOTE! Don't pull the strip.





## Pienjännitesähköasennukset saunaan.

Perustuu CENELEC HD 60364-7-703:2005



### Low voltage electrical installations in sauna

Based on CENELEC HD 60364-7-703:2005 standard

#### ZONE 1 (ALUE 1)

Only the sauna heater and its essential parts can be installed on the zone 1. On the zone 1, fiber optics can be installed, e.g. Cariitti Stove Lens Fibre 1532633

#### ZONE 2 (ALUE 2)

There are no special requirements for the heat resistance of electrical appliances on the zone 2.

#### ZONE 3 (ALUE 3)

Any electrical devices must withstand a minimum ambient temperature of +125°C, and the wire insulation min. +170°C (there are special requirements also for the wiring).

Source: SFS 6000-7-703. Find out more [www.sfs.fi](http://www.sfs.fi)